

## LUXAPOOL™ EPOXY (2-PACK KIT)



### Coverage

Approximately 20–25 m<sup>2</sup>/3.5L kit per coat for best results, dependant on surface type and condition. A 300–450 µm DFT system is recommended. Service life is directly proportional to coating thickness. For commercial applications, contact Colormaker Industries. A minimum application of 2 colour coats (preferably 3) of LUXAPOOL Epoxy are recommended for best service life. For extremely porous surfaces, LUXAPOOL Epoxy Primer Sealer is recommended as a first coat. An average size pool (9 x 4.5m x 1.5m average depth; approx 80m<sup>2</sup> or 60,000L) requires approximately 7–8 x 3.5L colour kits for a 2 coat finish and 10–12 kits for a 3 coat finish.



### Colours

LUXAPOOL Epoxy is available in 20 standard and 5 stock Designer Colours. Other Special Colours, available by special arrangement, include over 200 Aust. Std. [AS 2700] colours.



### Application

Should be applied by brush and roller only over a properly prepared substrate. Refer to the relevant Application Guide for specific substrate types if considering DIY application.

## LUXAPOOL™ CHLORINATED RUBBER



### Coverage

Approximately 7m<sup>2</sup>/L per coat, depending on surface type and porosity. A minimum of 3 coats recommended; 4 coats are preferred for best service life.



### Colours

LUXAPOOL Chlorinated Rubber is available in 7 standard colours.



### Application

May be applied by brush and roller over a properly prepared substrate. Refer to the relevant Application Guide for specific substrate types if considering DIY application.

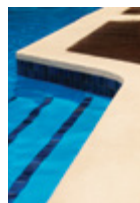
**MAINTENANCE** Make sure that your pool shop knows that your pool has either an Epoxy or Chlorinated Rubber Finish, and our recommended pool chemistry for each coating type. This is available via your LUXAPOOL stockist.

**POOL WATER CHEMISTRY MAINTAIN:** • pH between 7.6 and 7.8 • TOTAL ALKALINITY between 140–160 ppm for light colours, 160–180 ppm for darker colours. • CALCIUM HARDNESS of 280–320 ppm • CHLORINE LEVELS at a minimum consistent with good hygiene; Epoxy <3.0 ppm, Chlor Rubber <2.0 ppm • MINIMISE USE OF ACID where possible. • BRUSH DOWN pool surfaces every 4–6 weeks over the swimming season to maintain a coating of good integrity and thus improve service life. It is good practice to continue to brush down every 6–8 weeks in the off-season.

The above advice is a general guide only. Application Guides specific to your pool surfaces may be obtained from Colormaker Industries, the LUXAPOOL website or your authorised LUXAPOOL stockist.

**PLEASE NOTE:** all pools vary with respect to surface type, texture and integrity and this will influence the finished coating. Also, climatic and/or weather conditions prior to, during and after the application of LUXAPOOL coatings will affect the finished coating. These variables MUST be taken into account by the user or applicator.

## ALSO AVAILABLE FROM COLORMAKER INDUSTRIES:



LUXAPOOL Poolside & Paving: an innovative concept in decoration for poolside surfaces. LUXAPOOL Poolside & Paving is a water-based, rubberised non-slip coating that is easy to apply and provides a safe, durable decorative surface, ideal for rejuvenating pool surround areas.



LUXAPOOL SEF (Structural Epoxy Filler): is a fully formulated, under-water grade, 2-pack Epoxy Filler designed for surface repair and medium/fine surface filling prior to the application of LUXAPOOL Epoxy finishes.

LUXAPOOL™   

**colormaker**  
INDUSTRIES   
quality coatings through research & innovation

## COLORMAKER INDUSTRIES

44 Orchard Rd Brookvale NSW 2100 AUSTRALIA

Phone: +61 2 9939 7977

www.luxapool.com.au • email: info@luxapool.com.au

This Colour Guide is printed with Titan which is an FSC approved paper stock.

™LUXAPOOL is a trade mark.



# Luxa pool™

# Colour Guide

PREMIUM FINISHES FOR POOLS, AQUATIC FACILITIES, PONDS AND FOUNTAINS



## Colour Guide

### Premium finishes for pools, ponds, fountains and other aquatic facilities\*.

LUXAPOOL Coatings are available in two distinct chemical types – **Epoxy** and **Chlorinated Rubber** with each designed for different uses.

#### LUXAPOOL™ EPOXY (2 –PACK)

is the premium choice for all new pool and aquatic facilities and can also be used to achieve a beautiful luxury finish in older pools. **LUXAPOOL Epoxy** is suited to application over both old and new cement render, fibreglass, marblesheen, quartzon, pebblecrete and sound existing epoxy finishes.

**LUXAPOOL Epoxy** provides a smooth, hard surface which is simple to maintain. **LUXAPOOL Epoxy** colours are formulated to the highest technical standards and feature a durable luxury finish with exceptional resistance to salt water and pool chlorination chemicals. It is algae resistant and safe for use with fish and mammals after proper surface conditioning.

\*Aquaculture, decorative fish ponds, wildlife sanctuary ponds and marine parks.

#### LUXAPOOL™ CHLORINATED RUBBER

may only be used on old or new concrete pools and existing chlorinated rubber finishes. It displays excellent adhesion, particularly over sound existing chlorinated rubber coated surfaces.

**LUXAPOOL Chlorinated Rubber** is resistant to normal levels of swimming pool chemicals, both in salt water and chlorinated systems, and has a proven record of long service in both domestic and commercial pools. **LUXAPOOL Chlorinated Rubber** delivers fine sealing properties and a hard satin finish which is simple to maintain. It is algae resistant and can be easily re-coated when desired.

Image courtesy of The Coast Resort Merimbula NSW Australia



Regency White



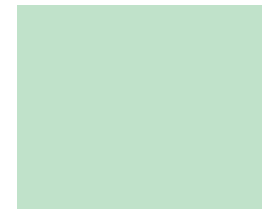
Riversand



Emerald Green



Pond Green



Opaline



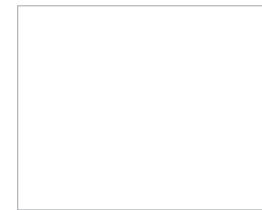
Brook Green (CR)



Aquamist (CR)



Atlantis\*



White (CR)



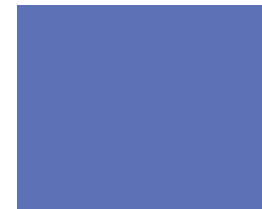
Whitsunday



Lagoon



Turquoise\*



Jacaranda



Crestwood



Pacific Blue (CR)



Adriatic (CR)



Tahitian



Misty Blue



Mid Blue



Devonport\*



Serenity



Platinum



Slate\* (CR)

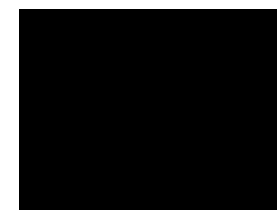


Deep Ocean\*

(CR) Also available in **Chlorinated Rubber**

\*Stock Designer Colours – premium charges apply.

Disclaimer: The samples in this colour card are as near to the actual colours as the printing process permits. Actual colours vary from this colour card and from batch to batch. Prospective users and specifiers MUST satisfy themselves as to the suitability of coating and colour prior to application. Colour samples can be made available for this purpose; charges apply.



Black (CR)